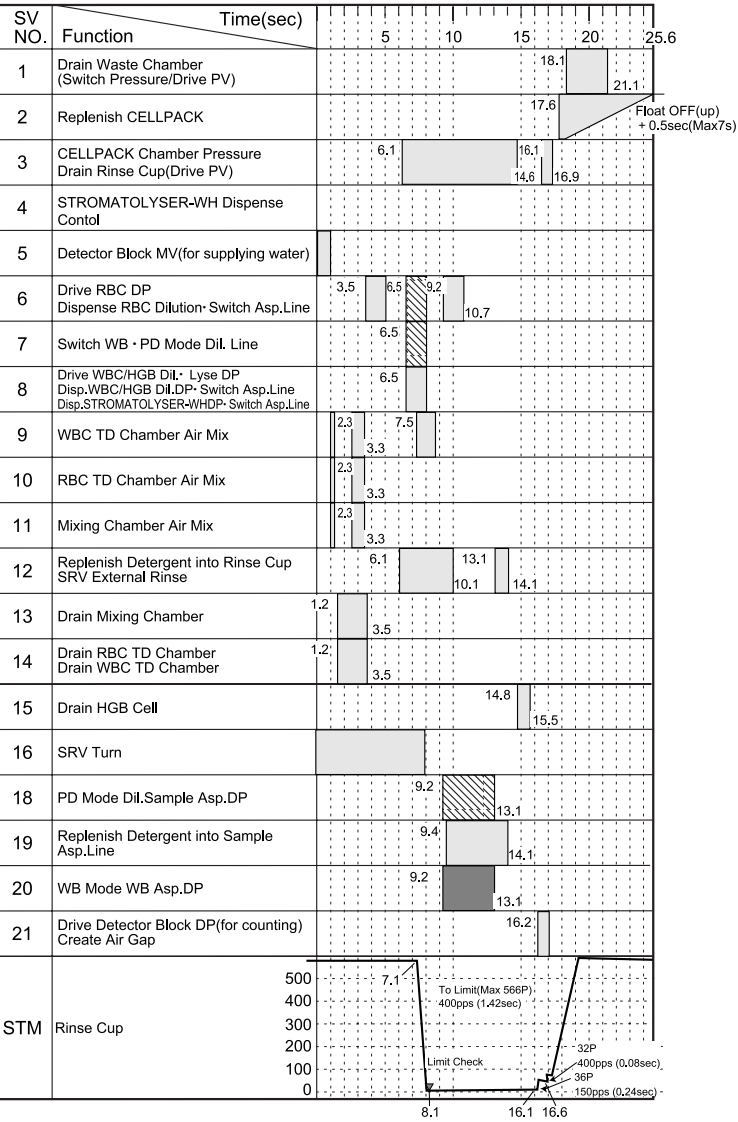


Mode Switch Sequence

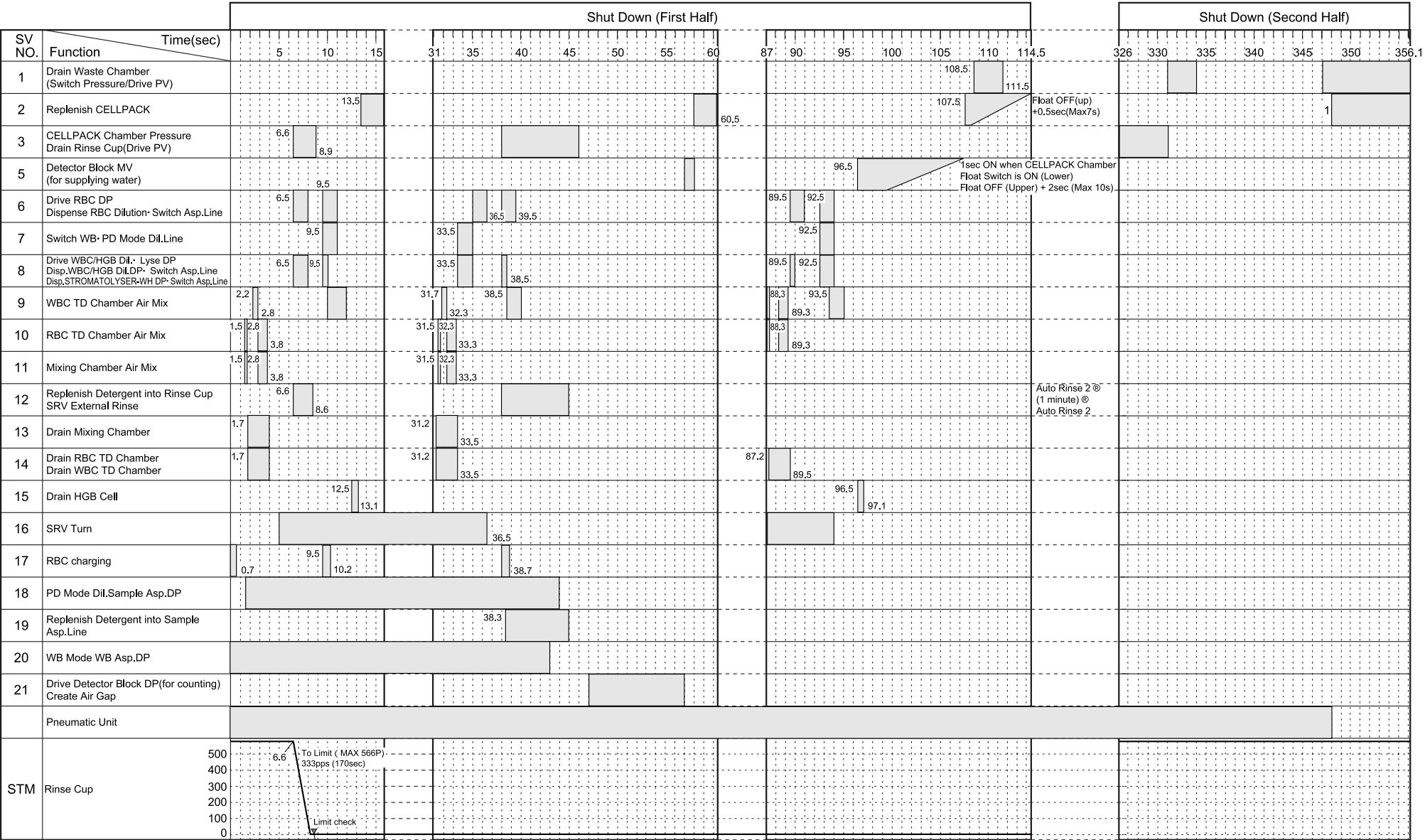


Operate only when WB mode is switched to PD Mode.

Operate only when DPmode is switched to WB Mode.

Note) 1.Operation of SV9 ~ 11(for Mixing) is 0.2sec ON 0.2sec OFF.

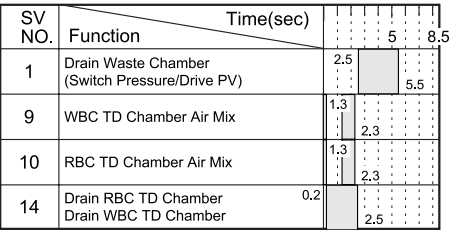
Shut Down Sequence



Note) 1. Operation of SV9 ~ 11(for Mixing)is 0.2sec ON 0.2sec OFF.

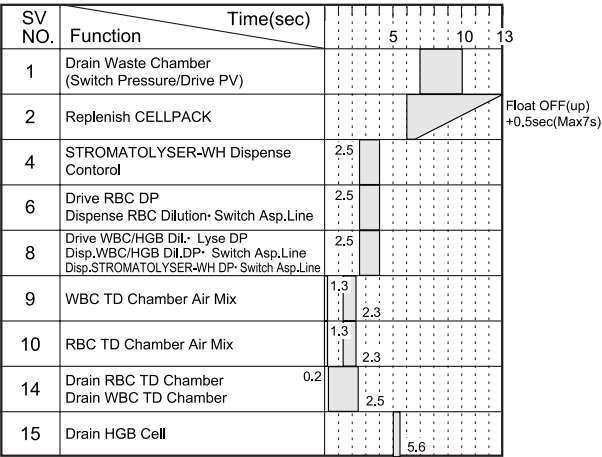
1 0.2sec ON 0.2sec OFF,repeat until 0.5kg/cm² reaches 0.3kg/cm² or lower.(Max 20 times)

Brush Cleaning Sequence



Note) 1. Operation of SV9 ~ 10(for Mixing)is 0.2sec ON 0.2sec OFF.

Diaphragm Pump Test Sequence



Note) 1. Operation of SV9 ~ 10(for Mixing)is 0.2sec ON 0.2sec OFF.